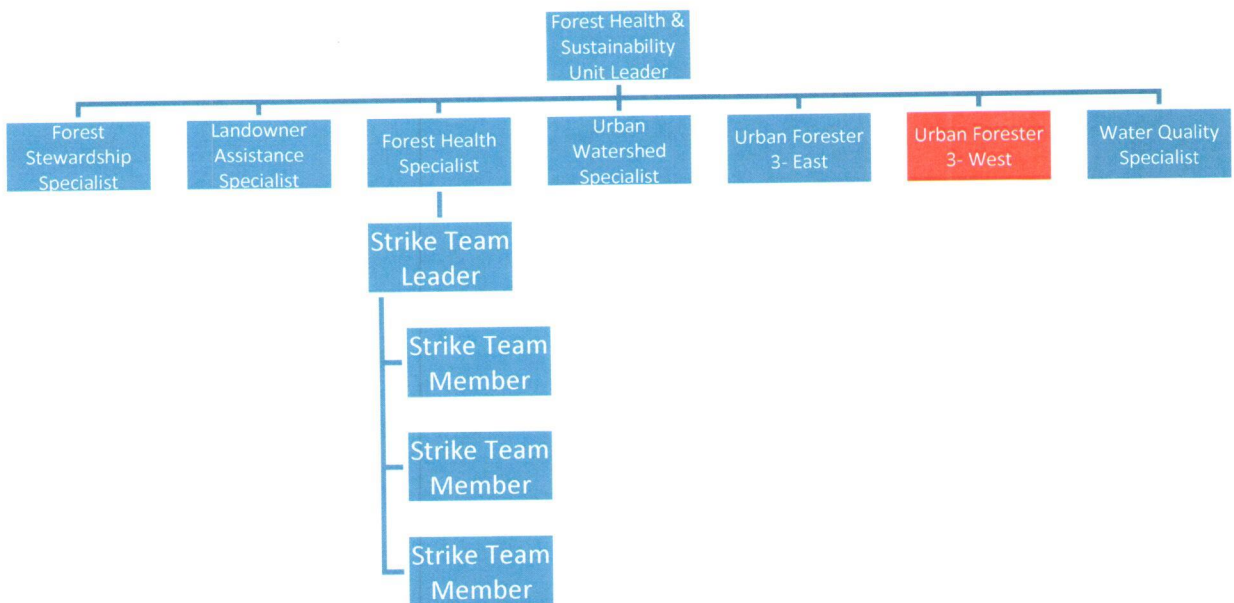


For more information, please contact:

HEATHER SLAYTON | Assistant State Forester- Programs, Personnel, Planning
Department of Agriculture
Ellington Agricultural Center
P.O. Box 40627 Melrose Station, Nashville, TN 37204
o. 615-837-5432, c. 615-218-4377, f. 615-837-5003
heather.slayton@tn.gov
www.tn.gov/agriculture

Job Classification Description and Application information can be found on the Department of Human Resources webpage at this site:

Organization:



Regional Urban Forester- Forest Health and Sustainability Unit

Memphis, TN

[Memphis](#) is located on the Mississippi River in west Tennessee and is one of Tennessee's 4 booming metropolises. Famous for music legends Elvis Presley and B.B. King, Memphis boasts a strong music scene with Beale Street offering an exciting venue for live music and street performers. Visiting the Rock 'n' Soul Museum and Presley's Graceland offers a deeper insight into Memphis' music roots. The city is also world renown for having the best, most diverse barbeque with ribs, wings, pulled pork and every other meat combination flavored with official Memphis style sauces. After filling your belly with barbeque, you may want to walk it off by visiting the walking trails along the Mississippi River. Several river cruises also provide visitors with relaxing ways of seeing the Memphis river front and the Mighty Mississippi. Or you could head to Overton Park in the heart of the city to enjoy strolls through some of the best managed urban forests in the state.

Division Background

The Tennessee Division of Forestry (TDF) celebrated it's centennial anniversary in 2014. One of the Division's first missions was to plant trees on eroded and abandoned farm land in the western part of the state. Over the decades, TDF has grown to conserve, protect, and enhance Tennessee's 14 million acres of forest land through forest health protection, rural and urban forest management, wildfire and prescribed fire management, water quality protection, forest business services, state forest management and conservation education. Today, TDF employs over 400 personnel statewide and is well known as the wildfire and forest health experts. The Division resides within the Tennessee Department of Agriculture whose mission is to promote wise uses of Tennessee's agricultural and forest resources, to develop economic opportunities, and to ensure safe and dependable food, fuel, and fiber for all citizens.